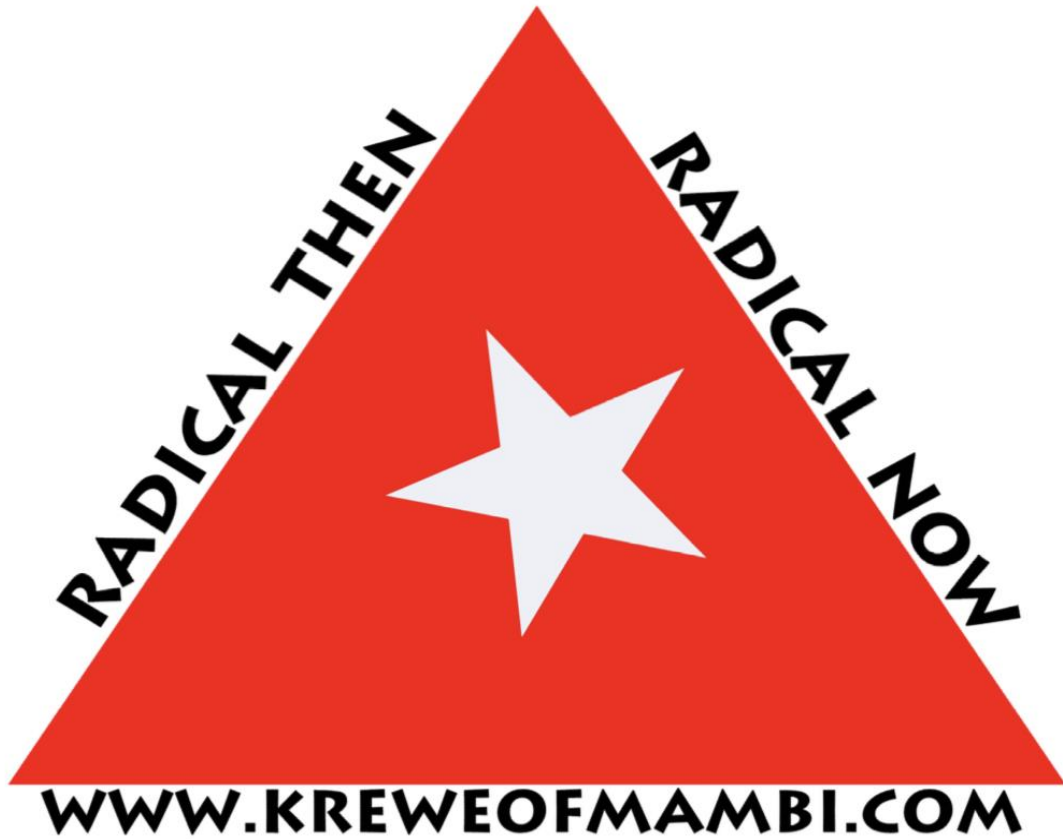


!MAMBi



MEMBER HANDBOOK

FOLLOW US ON



@KreweofMambi

www.kreweofmambi.com

TABLE OF CONTENTS

TABLE OF CONTENTS	1
HISTORY OF THE KREWE OF MAMBI	2
MISSION	2
CUBAN CLUB FOUNDATION	2
MEMBERSHIP	2
PARADE GUESTS	4
PARADE/FLOAT RIDER RULES	6
PRE/POST PARADE.....	7
GUN BOXES.....	7
MAMBI BOARD OF DIRECTORS	7
MAMBI RANKS	7
RANK CHART	8
OFFICERS.....	9
MAMBI MERIT SYSTEM.....	11
AWARDS	12
UNIFORM	13
FIGURES	15
FREQUENTLY ASKED QUESTIONS.....	16

HISTORY OF THE KREWE OF MAMBI

The original Mambi or Mambises were peasant rebels who fought alongside the Rough Riders and Buffalo Soldiers for Cuba's independence from Spain during the Cuba War of Independence 1895-1898. These freedom fighters, who often went into battle with only a machete or an old rifle, used guerilla tactics against superior Spanish forces.

Inspired by the ideals of Jose Marti and the indomitable fighting spirit of General Antonio Maceo, the greatest Mambi of them all, many Cuban, Italian and American volunteers from Ybor City and West Tampa joined the Mambi in their struggle for Cuban independence. The cigar workers of Tampa Bay were so active in their support of the Cuban independence movement that one Spanish general called Tampa, *"the very heart of the American conspiracy"*.

In 1998, to help generate interest and re-ignite membership in El Circulo Cubano, (The Cuban Club), Dr. Paul Dosal, along with several others founded Sociedad de Mambi, known today as the Krewe of Mambi.

MISSION

The purpose or mission of the Krewe of Mambi is to recognize and preserve the history of the original Mambises. As a section of El Circulo Cubano de Tampa (The Cuban Club), the Krewe of Mambi shares the club's commitment of preserving and maintaining the building along with the history and culture therein. Additionally, the Krewe of Mambi is committed to support, participate, and represent itself and its members in community events, charities, and other worthwhile causes. El Circulo Cubano de Tampa was founded as a social club and mutual-aid society and in keeping with that spirit and mission, the Krewe of Mambi promotes and encourages its members to collectively give back to our community and to assist its own membership through volunteerism and fundraising.

CUBAN CLUB FOUNDATION

The Cuban Club Foundation, a separate non-profit entity, was formed to encourage and promote the preservation of the Historic Cuban Club building. They currently own the building and are responsible for its day to day operations and maintenance.

MEMBERSHIP

Membership opportunities are available to everyone regardless of gender, ethnicity, race, religion, or sexual orientation. The hard work and sacrifice of the Cuban Club members built this Historic Landmark in 1917, in Ybor City, by continuing membership opportunities; we maintain its integrity and ensure its existence for generations to come. The success of the Krewe of Mambi is dependent upon its MEMBERS and the commitment they have to our mission. Members are expected to represent our Krewe with Pride, Dignity, and a sense of Team.

- **RECREO MEMBERSHIP**

As a Recreo member, you are a participant in preserving the Cuban heritage of the Tampa Bay area. With the Recreo membership you are entitled to participate in all Cuban Club activities including, but not limited to, social and cultural events. Members may attend Krewe of Mambi socials held throughout the year and/or other announced events.

- **KREWE OF MAMBI SINGLE MEMBERSHIP**

In addition to all the benefits of Recreo, this membership also entitles the member to participate in all parades where the Krewe of Mambi is represented.

- **KREWE OF MAMBI FAMILY MEMBERSHIP**

In addition to all the benefits of Recreo, this membership also entitles the member to participate in all parades where the Krewe of Mambi is represented.

To be eligible for family membership, you must meet one of the following criteria:

- Two adults (husband/wife, fiancé, boy/girlfriend, or domestic partner) cohabiting within the same household.
- Two adults (husband/wife, fiancé, boy/girlfriend, or domestic partner) cohabiting within the same household with children. Children may remain on the family membership up to the age of 26 as long as they are living at home and attending college/university.
- Single parent with children living with or without them within the same household. Children may remain on the family membership up to the age of 26 as long as they are living at home and attending college/university.

- **YEARLY MEMBERSHIP FEES**

All Krewe Membership Fees are due on or before the January Happy Hour.

- Recreo Membership \$ 50.00
- Krewe of Mambi Single \$ 325.00 *
- Krewe of Mambi Family \$ 550.00 *

* All Krewe Membership Fees paid on or before November 30th will receive a discount as follows:

- Krewe of Mambi Single \$ 300.00
- Krewe of Mambi Family \$ 500.00

- **NEW MEMBER REFERRAL PROGRAM**

Any existing Krewe of Mambi Member in good standing that refers a new member shall receive \$ 30.00 off Single Membership and \$ 50.00 off Family Membership Fees for the upcoming parade season.

PARADE GUESTS

Guests will be allowed to participate at the following parades provided all Members and Guests adhere by the following guidelines set forth by the Krewe of Mambi.

- **CHILDREN'S GASPARILLA EXTRAVAGANZA**

- Krewe of Mambi Member must be in good standing.
- Family and friends one (1) year of age and older.
- Single Membership is allowed three (3) guests at no charge.
- Family Membership is allowed five (5) guests at no charge.
- There will be a \$10.00 per guest fee for guests over the allotted amount listed above.
- All guests using Krewe of Mambi provided transportation to parade must pay transportation (bus) fee.
- All guests must wear a Red Krewe of Mambi T-Shirt or uniform. Children 12 and under are exempt.
- Krewe of Mambi members are solely responsible for their guests and their actions.
- Krewe of Mambi member must provide signed release prior to guest's participation.

***For safety reasons, children under one (1) year of age will not be allowed to participate with the Krewe of Mambi during the Children's Gasparilla Parade.**

****According to the Children's Gasparilla Extravaganza rules, children under the age of six (6) MUST ride in a vehicle or on a float or be pushed/pulled in a stroller, wagon, etc. by an adult.**

- **GASPARILLA DAY PARADE**

- Guests will not be allowed to participate during the Gasparilla Day Parade.

- **SANT 'YAGO ILLUMINATED KNIGHT PARADE**

- Guests will not be allowed to participate during the Sant 'Yago Illuminated Knight Parade.

- **ROUGH RIDERS' ST. PATRICK'S DAY PARADE**

- Krewe of Mambi Member must be in good standing.
- Krewe Members are limited to two (2) guests.
- Guests must be 21 years of age or older.
- Parade Guest Fee: \$ 50.00 per guest.
- All guests must wear full Krewe of Mambi uniform.
- Krewe of Mambi members are solely responsible for their guests and their actions.
- Krewe of Mambi member must provide signed release prior to guest's participation.

- **CHASCO FIESTA STREET PARADE**

- Krewe of Mambi Member must be in good standing.
- Family and friends one (1) year of age and older.
- Krewe Members are limited to two (2) guests each at no charge.
- There will be a \$ 25.00 per guest fee for guests over the allotted amount listed above.
- All guests must wear a Red Krewe of Mambi T-Shirt or uniform.
- Krewe of Mambi members are solely responsible for their guests and their actions.
- Krewe of Mambi member must provide signed release prior to guest's participation.

***For safety reasons, children under one (1) year of age will not be allowed to participate with the Krewe of Mambi during the Chasco Fiesta Street Parade.**

- **DE SOTO HERITAGE PARADE (Bradenton)**

- Krewe of Mambi Member must be in good standing.
- Family and friends 18 years of age and older.
- Parade Guest Fee: \$ 25.00 per guest.
- All guests must wear a Red Krewe of Mambi T-Shirt.
- Krewe of Mambi members are solely responsible for their guests and their actions.
- Krewe of Mambi member must provide signed release prior to guest's participation.

- **VETERANS DAY PARADE**

- Krewe of Mambi Member must be in good standing.
- Family and friends one (1) years of age and older.
- Parade Guest Fee: \$ 10.00 per guest.
- Active Military and Veterans Free of Charge.
- All guests must wear a Red Krewe of Mambi T-Shirt or uniform.
- Krewe of Mambi members are solely responsible for their guests and their actions.
- Krewe of Mambi member must provide signed release prior to guest's participation.

***For safety reasons, children under one (1) year of age will not be allowed to participate with the Krewe of Mambi during the Veterans Day Parade.**

***For safety reasons, children under one (1) year of age will not be allowed to participate with the Krewe of Mambi during the Children's Gasparilla Parade.**

PARADE/FLOAT RIDER RULES

Due to the mature nature of some of the Krewe activities, events, and parades, parental discretion is advised. Please keep in mind that alcohol is consumed at all parades (except the Children's Gasparilla Extravaganza), please DRINK RESPONSIBLY. For the Gasparilla Day Parade, Sant 'Yago Illuminated Knight Parade, Rough Riders' St. Patrick's Day Parade, and the De Soto Heritage Parade (Bradenton), participating members must be 18 years of age and older and in full uniform. While our goal is to have fun, it is going to take all our efforts to do it safely. Please adhere to the following rules for float riders and walkers alike. This will ensure everyone has a safe and fun time.

- Be responsible. Take care of your own beads, bags, etc.
- No cardboard boxes on the float, all beads must be in bags.
- Bag/Bead placement is on a first-come basis.
- DO NOT move items that are not yours.
- Do not enter the area between the pull-truck and float.
- Boarding or de-boarding the float while moving must be done through the rear of the float with caution.
- Do not walk directly in front of the tow truck, driver may not see you. If you see a member fall or get injured during the parade, signal for the driver to stop.
- Respect the parade marshals. If you have an issue with one of them, do not take matters into your own hands. Bring it to the attention of one of our officers.
- Full uniform must be worn during every parade. Be mindful of your actions while in uniform.
- Please be mindful of members who have a disability, are injured, or need assistance.

PRE/POST PARADE

The General, if necessary, will determine who can ride the float to and from a parade. Riders will be selected keeping in mind those who will set-up and teardown. All other members will use buses arranged by the Krewe (if previously deemed necessary) or they can make arrangements on their own.

GUN BOXES

Our float, El Machete, has 12 keyed metal boxes (6 on each side), which are referred to as Gun Boxes. The Gun Boxes are intended to store beads, therefore making the beads more accessible during a parade.

- Gun Boxes are available for rent and are rented for an entire Parade Season.
- Gun Boxes are rented to Members on a first come first serve basis.
- The rental fee for the Gun Boxes will be announced at the beginning of each Parade Season.
- A key will be provided to the Member upon payment of the Gun Box rental. Said key is to be returned at the end of Parade Season. The Member may be charged a replacement fee if the key is lost, stolen, or not returned.
- It is not the responsibility of the Krewe of Mambi and/or its Officers to oversee the items in a rented Gun Box.
- The Member will be financially responsible for any intentional damages made to the Gun Box.

MAMBI BOARD OF DIRECTORS

The Krewe of Mambi Executive Officers / Board of Directors is responsible for the oversight of all Mambi matters. Board members consist of General, Lieutenant General, Division Major Generals, Brigadier Generals, Commander of the El Machete Battalion, Secretary, Treasurer, Membership Director, Parade Director, Community Outreach Director, Cuban Club President. No more than 15 voting officers shall serve on the Board with the General serving as the tie breaking vote.

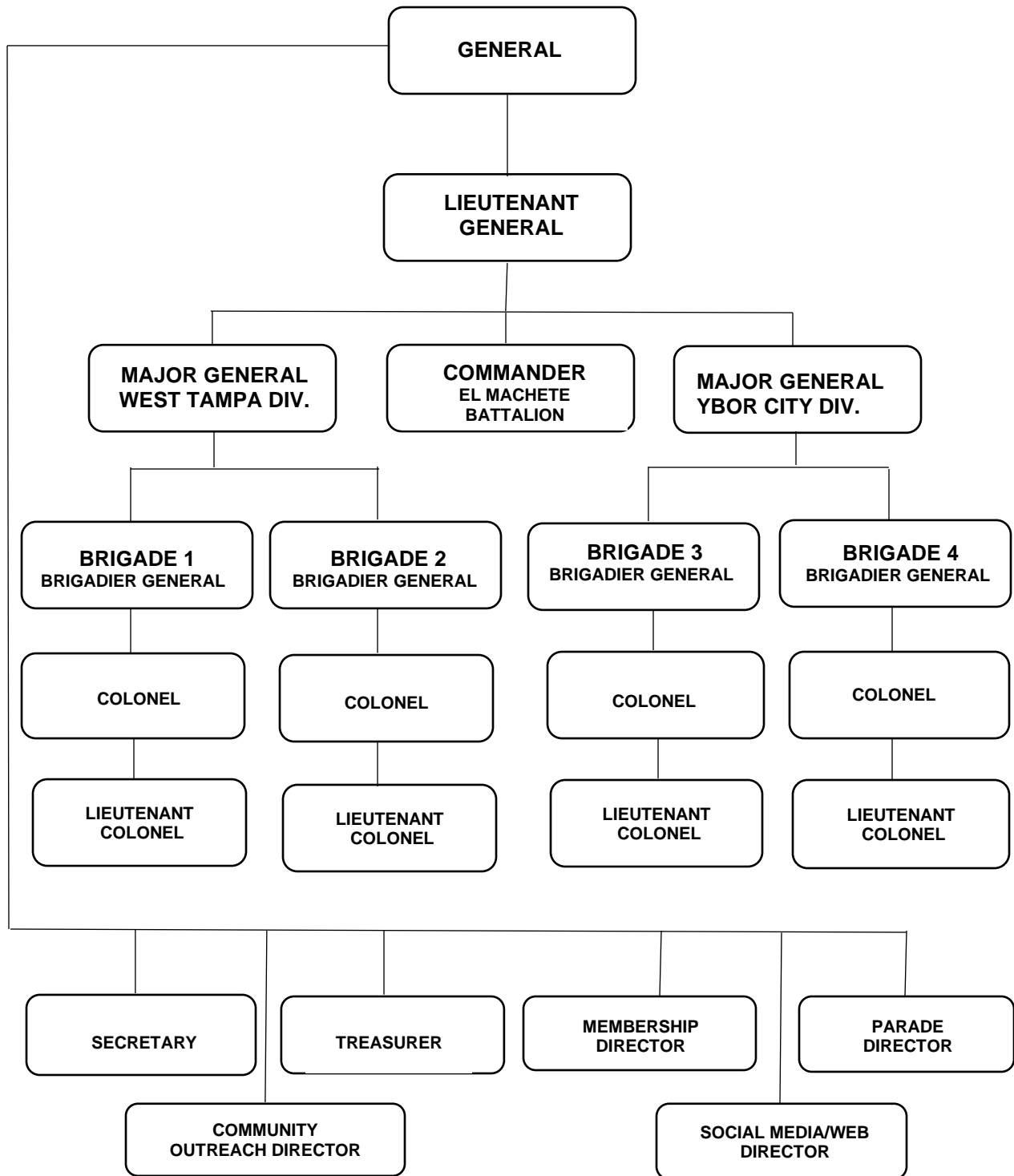
MAMBI RANKS

The Krewe of Mambi rank system is based on ranks used by the Mambi officers/soldiers during the independence of Cuba from Spain. Executive officers used stars on their collars to symbolize their rank.

Active Mambi Executive Officers shall wear 1-inch gold stars on both right and left collars. Corresponding gold or goldenrod appliques star(s) shall be sewn/ironed-on the sash. No other items should be affixed to the sash.

Retired Krewe of Mambi Executive Officers shall wear small 7/16-inch gold stars on both right and left collars. Retired officers do not use sashes.

RANK CHART



OFFICERS

- **GENERAL**

The Mambi General oversees all Krewe matters and activities. Parade responsibilities include, but are not limited to: security, supplies, float, and tow truck arrangements and transportation of Krewe members when buses are required. Storage, maintenance and anything float related fall under the General's duties. The General may, at his/her discretion, delegate these tasks to other officers or members. Responsibilities and duties may vary from one General's regime to another.

The General must maintain communication with the President of the Circulo Cubano, Cuban Club Foundation, and all members of the Krewe. Information on upcoming parades, events, and activities shall be conveyed via email, all social media outlets utilized by the Krewe of Mambi, and any other form of communication.

The General appoints the Krewe of Mambi Board of Directors and requires them to attend all meetings. The Krewe of Mambi is comprised of four brigades. Each brigade will be led by three individuals, a Brigadier General, Colonel and Lieutenant Colonel. These positions are chosen by the General. Members who are asked to fill these positions accept the responsibility for their brigade. Each brigade must be represented at each board meeting.

- **LIEUTENANT GENERAL**

The Lieutenant General is second in command and shall work alongside the General to carry out all his duties. The Lt. General will serve on the Circulo Cubano Board as Vice President unless otherwise determined by the President.

- **DIVISION MAJOR GENERAL**

The Division Major General assists the General and Lieutenant General. Duties include, but are not limited to, enforcing uniform policy, overseeing and assisting subordinate Brigadiers with events and happy hours and is responsible for the two divisions, as follows:

- **West Tampa Division**

- Brigades 1 and 2

- **Ybor City Division**

- Brigades 3 and 4

Future divisions may be created by the General and approved by the Board of Directors if needed.

- **BRIGADIER GENERAL**

The Brigadier General is responsible for their brigade. Duties include, but are not limited to, coordination of their respective happy hour. This includes communicating with the members of their brigade for participation herein, set-up and breakdown of tables and chairs and providing and serving the food for the happy hour. Brigadier Generals should set a positive example for other members to follow. It is his/her duty to attend all board meetings. In the event of their absence, they must coordinate with the Colonel or Lieutenant Colonel of their brigade to attend to ensure participation.

- **COLONEL**

The Colonel shall assist the Brigadier General as well as any ranking officer. Colonel shall attend all board meetings in the event the Brigadier General is not able to attend.

- **LIEUTENANT COLONEL**

The Lieutenant Colonel shall assist the Brigadier General, Colonel, or any ranking officer. The Lieutenant Colonel shall attend all board meetings in the event the Brigadier General or Colonel are not able to attend.

- **COMMANDER OF EL MACHETE BATTALION**

The Commander of El Machete Battalion is responsible for overseeing all float operations prior, during, and post parades. Duties include, but are not limited to, maintenance and upgrades. This Battalion will include members that will assist the Commander with all of the above-mentioned duties.

- **OFFICER OF THE DAY**

The Officer of the Day is an honor bestowed upon a member or officer that has gone above and beyond the call of duty. They have shown exemplary dedication and are considered to be an asset to the Krewe. Elected before the start of each parade, the General, Lieutenant General and the honoree of the prior parade will select the new Officer of the Day. Upon the announcement of the new honoree, he or she will wear the sash bestowing this honor that day. They will also receive a decorative pin for their uniform.

MAMBI MERIT SYSTEM

Since the Krewe of Mambi debut, its members have contributed their time, money, and hard work for the betterment of the Krewe, the Cuban Club, and our community. At times, the Cuban Club Foundation calls upon our members to help with events and/or building maintenance. Our assistance to the Club, the Krewe, and Community is offered without any expectation of recognition or compensation. We are always proud to honor requests for volunteers. A spirit of volunteerism is what brought the Krewe together and that spirit will continue for years to come.

The merit system was adopted to encourage, recognize, and ultimately, reward voluntary contributions for the progression of the Krewe, the preservation of its historic home, and the welfare of the community. The purpose of the merit system is not to penalize non-participation, but to recognize all the contributions to the Krewe, Club, and community.

- **DESCRIPTION**

Merit points will be awarded to members who go above and beyond the minimum expectations as noted above. All merit points are reset at zero each November and the accumulation of new points starts after the happy hour.

The General shall appoint an officer to keep track of all points/hours of each member with the assistance of each Brigadier General.

Merit points will be awarded as follows:

- Krewe/Club/Community Events – one merit point for one hour of work.
- Float Work Day – one merit point for one hour of work.
- Donated Equipment or Materials, minimum of \$50 – one to five points.
- Select InterKrewe Events such as Rough Riders' Pub Crawl, IKC sponsored events, and Galas/Balls/Coronations – one to two points for attendance.

For Krewe/Club events and float work days, members will sign in and out to account for hours worked.

- **CONTRIBUTIONS**

Members may contribute in different ways, according to their means and abilities. Examples include: donations, valuable in-kind service or hard work. Everyone can offer something and everybody should contribute something. We are determined to maintain the spirit of volunteerism to our krewe, club, and community.

- **HAPPY HOURS**

Provide fun and fellowship. A perfect setting to welcome new friends and recruit members. Also provides an opportunity to show off our beautiful club.

Since the happy hours rotate and it will take all year for participation in them to be counted, merit points can be collected all year long rather than after the last requirement is met.

Each member of the Krewe of Mambi will be assigned to one of four brigades. These brigades work together to coordinate happy hours. Your Brigadier General is your primary point of contact. If you have any questions or ideas, please contact them first.

- **DONATED EQUIPMENT**

Merit points for donated items will be issued on a case by case basis by the Mambi Board.

- **INTER-KREWE SOCIALS**

The Mambi Board will select different krewe events throughout the year and assign points for them. They will be announced well before the event. Representation at events of other krewes is highly encouraged.

- **PARADE REQUIREMENT**

Active members are expected to complete the following:

1. Organize, contribute to, and/or participate in (2) two of your Brigade hosted happy hour.

AND

2. Offer 10 volunteer work hours per year, divided between three (3) events.

AWARDS

Awards will be given based on the total amount of hours members amass during the year. Awards will be presented during the November Happy Hour or at the Mambi Gala, if held. Through the Merit System, the Krewe will recognize and reward participation and at the same time, encourage all new members to live up to the standards of their predecessors.

The following awards will be awarded based on the total numbers of hours earned.

- **MAXIMO GOMEZ**

This award is presented to those members who volunteer more than 30 hours.

- **OUTSTANDING MAMBI OF THE YEAR**

This award is voted on by the Mambi Board for a member whose dedication and hard work to the Krewe exemplifies the true meaning of volunteerism.

UNIFORM

The Mambi uniform depicts the actual uniform worn by the Mambi soldier during the Spanish American War alongside Teddy Roosevelt's Rough Riders and Buffalo Soldiers. We DO NOT consider it a “costume”. Failure to comply with the complete uniform requirements may result in your inability to participate in Mambi parades/events.

- **UNIFORM PATCHES**

Upon joining the Krewe of Mambi, you will be assigned a member number and will be given your number on a blue patch. The Mambi Seamstress will have all other required patches.

- **MAMBI JACKET**

Jacket is tailor made by our seamstress, for a perfect fit. All patches will be sewn on your jacket as pictured on **Fig. 1** Right View and **Fig. 2** Left View.

Please contact your Brigadier General for latest seamstress information.

Jacket is to be worn EXACTLY as pictured on **Fig. 3** Must be buttoned to the top and sleeves down (not rolled up). Sleeves may be cuffed once. Do not add nor delete any patches. This is to be worn by both males and females. Females have an alternative blouse they may use in lieu of the jacket.

Please note: On cold days you will not be able to wear a coat/jacket other than the Krewe of Mambi Jacket during the parades choose accordingly.

- **LADIES ALTERNATIVE BLOUSE**

The blouse is an alternative to the jacket and provides a much cooler uniform option. Blouse is to be worn EXACTLY as pictured on **Fig. 4**.

- **PANTS**

Men - Painter pants, Dickies, or any pants that are off-white, light beige, or natural in color. Pants must be similar in color to the jacket. Straight leg, no cargo pants allowed. If you purchased painter pants you must cut off all loops.

Ladies - You can also purchase pants like the men.

You may find pants at the following locations:

Walmart, Target, Home Depot, Army Navy Surplus, or Amazon.

- **LEGGINGS/BOOT COVERS**

These are required and must be worn by both male and female. Please contact your Brigadier General for vendor information. You will be asked for measurements so be prepared. Your leggings shall look as pictured on **Fig. 5**. Leggings should cover pants and boots.

- **HAT**

Cowboy hat style in wool, felt, or straw. Light brown, brown, or straw. Can be purchased at any department store or specialty store. A red triangle with white star must be sewn in the front of the hat as pictured on **Fig. 6**. If you take your hat to the seamstress, she will sew your triangle on your hat. Hats can be customized to your personality as long as it's in good taste. No feathers hanging from the back of the hat.

- **BELT**

If you are wearing a jacket, a brown leather belt is required. Belts can be solid or have eyelets for hanging beads. You may also wear a belt as pictured on **Fig. 7**.

- **BOOTS**

Think comfort. Plain brown boots or shoe are acceptable. No cowboy boots, gym shoes, sneakers, or tennis shoes. Remember leggings will cover most of the boot.

- **RED BANDANA**

Must be worn by all members wearing the jacket. The bandana is to be worn around your neck and can be purchased through the Krewe. Must be solid red with no designs.

- **OPTIONAL ACCESSORIES**

Cartridge boxes, cross straps, shoulder straps as pictured on **Fig. 7** may be used. Canvas / leather side bags can also be used. A fake machete securely attached to a strap on your back is also allowed. Use your imagination, but it must look authentic for that time period. Canteens / leather bota are a great accessory as well.

Mambi t-shirts or tank tops can be worn underneath your jacket. Shirts can be purchased through the krewe.

You do not have to wear your jacket to staging area. The General will make an announcement approximately 30 minutes prior to the start of the parade, signaling the time to get into full uniform.

If you have any questions or need assistance with regards to the uniform, please contact the General, Lieutenant General, or your Brigadier General.

FIGURES

RIGHT VIEW



FIG. 1

LEFT VIEW



FIG. 2

FRONT VIEW



FIG. 3

FEMALE BLOUSE



FIG. 4

**LEGGINS/
BOOT COVERS**



FIG. 5

HAT



FIG. 6

**BELT &
SHOULDER TRAP**



FIG. 7

FREQUENTLY ASKED QUESTIONS

How many beads do I need to take to a parade?

As a rule of thumb, you will tend to use about 1 ½ gross per mile, New members tend to throw more while they are determining their pace of throwing. Ultimately, it's your call as to how many beads you bring to the parade.

Can I throw/give away other items at the parade?

Yes. items such as stuffed animals, rubber bracelets, etc, are acceptable as long as they are in good taste.

How do I carry my beads during the parade?

Members will decide what works best for them. Many have hooks on their belts that allow them to carry some beads during the parade route, refilling from their bead bag on the float as necessary. Others carry canvas bead bags during the parade. No cardboard boxes are allowed on the float.

*SUGGESTION: Leave the paper wrapper on each bead bunch and remove it only when you are ready to throw that bunch, otherwise the beads become tangled together.

What beverages/snacks does the Krewe provide for parade days?

Keg(s) of beer, soda, water, and ice are provided at each parade with the exception of the Children's Gasparilla Extravaganza Parade which is designated a "dry" parade with no alcohol. At any other parade you are welcomed to bring a "small - personal" cooler with your own adult beverage as well. Including staging, parade days are usually long. We recommend you bring some food with you. Most people bring sandwiches and similar snacks. At times, the Krewe will provide some snacks. You will be notified in advance should that happen.

For those who will be enjoying adult beverages, pace yourself. You'll want to make it to the end of the parade!

What's with the painted coconuts at the Gasparilla Day Parade?

It's our tradition to paint coconuts with the Mambi logo for this parade. A limited amount of coconuts are handed out to Krewe officers, board members, and/or dignitaries. Mambi coconuts are not generally kept by the member but are a special handout to give along the parade route. These should **NEVER** be thrown.

What if I still have questions?

Contact your General, Lieutenant General, or your Brigade General; they are all here to help you!